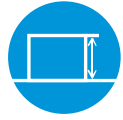


Industrial Ultrasonic Products



Super Idea for Ultrasonic Inspection

SIUI





About SIUI

SIUI is an ISO certified company and has been dedicated to R&D, manufacture and sales of Ultrasonic Flow Detectors for more than 40 years. SIUI has established advanced manufacture technique and widespread sales network, with its products serving in machinery, metallurgy, railway, shipbuilding, aircraft and building. SIUI has a complete product line, including phased-array ultrasonic flaw detectors, conventional flaw detectors, thickness gauges, and up to 1,000 types of probes and accessories.

Since 1995, SIUI has been certified by lots of domestic and overseas authorities.

- ISO9001 Certification
- European CE Marking
- Product Certification issued by Ministry of Railway
- An affiliated unit to the Product Quality Supervision and Test Center for Mechanical Industry Ultrasonic Instruments.
- The only professional institute of ultrasonic instruments in China.



*SIUI products are compliant with European, American and Japanese related standards.

SIUI is a member in professional NDT societies.



Our customers:



SyncScan 2

Maximize your efficiency for Phased Array & TOFD



SIUI's newly launched SyncScan 2, is a high-end ultrasonic flaw detector with 32:128PR PAUT and 2-ch TOFD, which can maximize your efficiency for PA and TOFD.

Superior Features

- High IP rate: IP 65
- Light weight: 4kg only including battery.
- 8.4" LCD with resolution 800×600 pixels.
- Faster scan speed(Approximately 3 meters/minute).
- Removable electric fan: cool down the system when it works in high temperature.
- Support PA/TOFD/UT, suitable for weld, forging and plate inspection.
- 32-channel PA is more suitable for inspection on extra-thick wall and high-attenuation material.
- 32-channel PA and 2-channel TOFD work simultaneously, focusing on pressure vessel inspection.
- Support PR mode, focusing on pipe corrosion inspection when with high-end dual-crystal PA probe.
- System ports: encoder, VGA, standard SD card, USB 2.0/3.0.

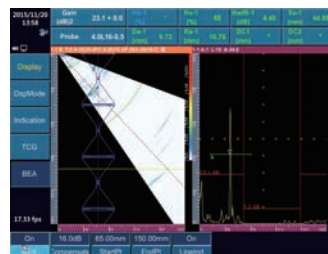


Application Range

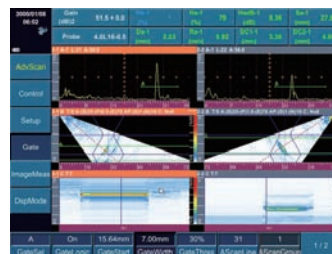
- Phased array inspection on tube, forged piece, bar, casting, weld, composite material, railway and alloy steel.
- TOFD inspection on weld of plate, pipeline, tank and boiler.
- Phased array, TOFD and conventional ultrasonic testing in various industries such as transportation, petrochemical engineering, machinery, metallurgy, railway, shipbuilding, aircraft and building.



Simultaneous Inspection of PA & TOFD



BEA Function (Backwall Echo Attenuator)



Two Groups of A+B+C Scans



Corrosion C Scan

SyncScan

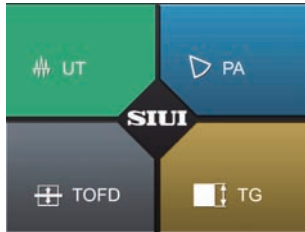
Minimize your cost for Phased Array & TOFD



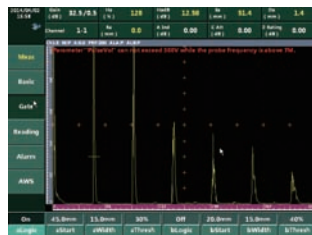
Latest ultrasonic flaw detector from SIUI, SyncScan incorporates the latest advancements in high-performance Phased Array and TOFD detection into one compact and durable unit. SyncScan can be upgraded with Phased Array, TOFD and thickness measurement to satisfy various inspection requirements.

Superior Features

- IP rate: IP65
- Light Weight: 3.75 kg with battery
- Touch screen: 8.4" LCD with resolution 800×600 pixels
- Upgradeable from conventional UT to PA / TOFD / thickness measurement
- TOFD optional software: 1~4 channel TOFD for Selection
- PA optional software: Simultaneous Display of PAUT and TOFD Software / PA Groups (up to 6 groups) / Flat Weld Groove / Corrosion Solution / Flat Weld Solution / Pipe Girth Weld Solution / Angle Weld Solution



Upgradeable from UT to PA / TOFD / TG



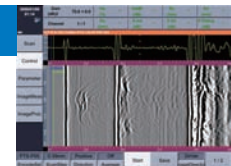
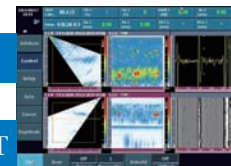
Conventional UT

Version 1: upgradeable to 16:128 PAUT + 1-ch TOFD/ UT

Version 2: upgradeable to 16:64 PAUT(PR) + 1-ch TOFD/ UT

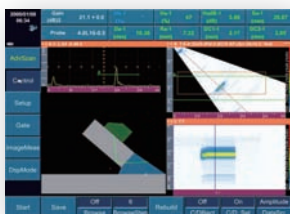
Version 3: upgradeable to 1/2/4-ch TOFD/ UT

upgradeable to 1/2/4-ch TOFD/ UT

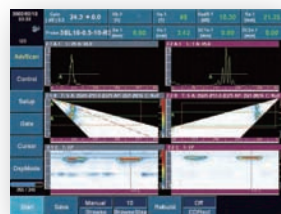


* PR: pitch & catch function. Thickness measurement function is available for all versions.

* Please define the version when purchasing.



Angle Weld Solution



Pipe Girth Weld Solution



Flat Weld Solution

Ultrasonic Flaw Detector & Thickness Gauge

Smartor

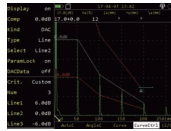
A combination of ultrasonic testing(UT) and ultrasonic thickness measurement(TG).

Superior Features

- High IP rate: IP 66
- Compact size: 198 (W)* 128 (H) *52 (D) mm
- Light weight: 0.9kg only including battery
- 5.7" LCD with high resolution 640×480 pixels
- Advanced ultrasonic testing & thickness measurement
- Smart test wizard & Weld Simulation



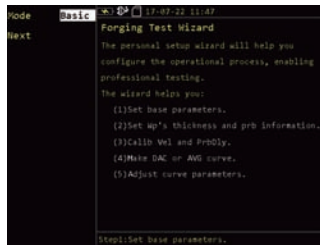
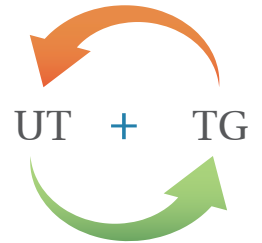
Back Strap



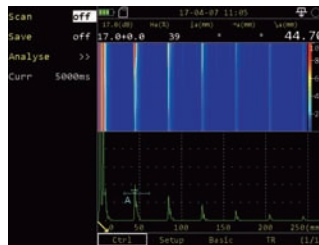
Version 1: UT



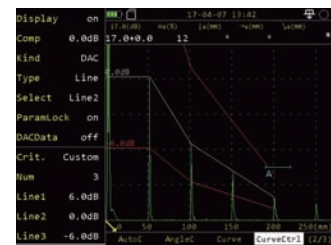
Version 2: TG



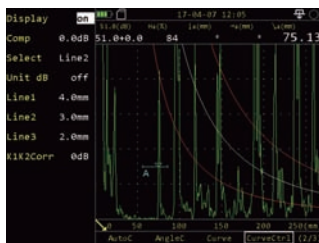
Test Wizard



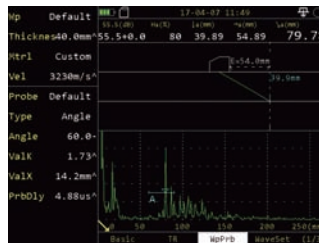
B-scan



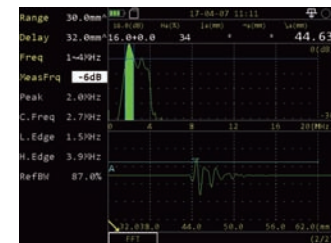
DAC Curve



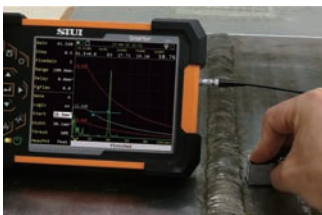
AVG/DGS Curve



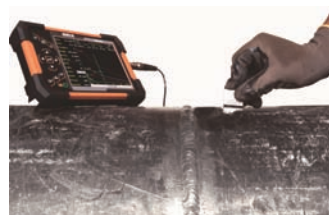
Weld Simulation



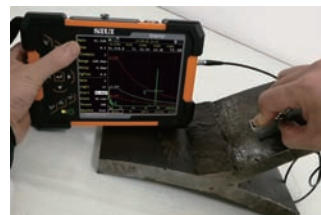
Probe Spectral Analysis



● Flat weld



● Pipe weld



● Angle weld



● On-site

Portable Ultrasonic Flaw Detector

Advanced Model

CTS-9009PLUS
CTS-9009

Popular Model

CTS-9006
CTS-9005



- Small Size
- Low Consumption
- High Performance

- Easy Operation
- Multi-Purpose
- Lightweight

Application

It is suitable for inspecting flaw position and size, which can be widely used for various detection demands, such as pipes and tubes, welding lines, pressure vessels and airplane parts.



Ultrasonic Thickness Gauge

Popular Model

CTS-30A
CTS-30B

Advanced Model

CTS-30C



- Compact Size
- Light Weight
- Low Consumption
- Long Operation Duration

- Multi-probe Selection
- Thru-coating Measurement



Application

Machinery / chemical / ship building/ aeronautical / aerospace industries

Ultrasonic Rail Flaw Detector

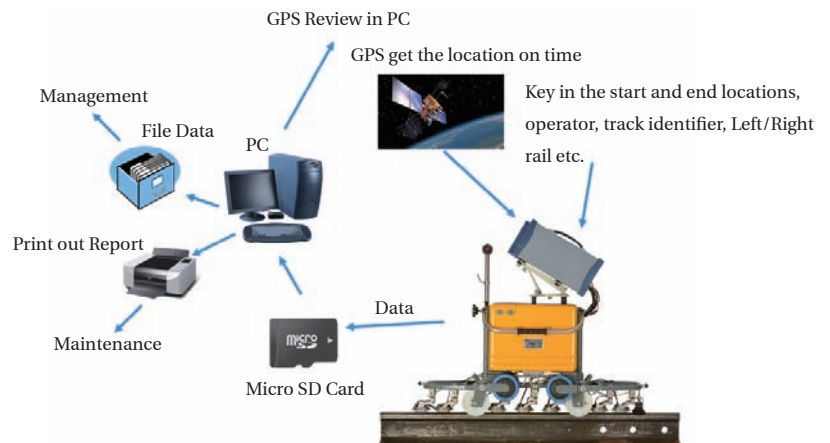
Hand Push RailRover



The RailRover Digital Ultrasonic Rail Flaw Detector is the latest digital hand pushed ultrasonic rail testing machine. It has 9 channels and an independent channel for handheld confirmation testing of welds and rail foot. Other features include a GPS location system, internal memory for saving data and the ability to transfer data to a PC or laptop via micro SD card connection to allow simple, easy defect management.

Superior Features

- 9 Individual Transmit/Receive Channels
- A & B Scan Display and Recording
- Self-Testing Function on Probes
- GPS Location System
- DAC on All Probes

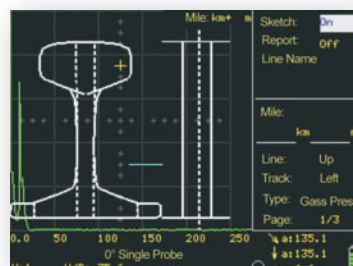


Hand Held RailTek

The RailTek ultrasonic flaw detector for rail weld joint is the latest digital portable ultrasonic rail testing machine with powerful function and easy operation, which is the first choice for rail weld joint inspection. Superior features include up to seven ultrasonic probes can be connected, high defect inspection rate and real-time Cineloop.

Superior Features

- Compact and Portable
- Up to Seven Ultrasonic Probes can be Connected
- Easy Operation
- Super-low Consumption
- Strong Performance
- Dynamic Recording



Multi-Channel Ultrasonic Flow Detector Series

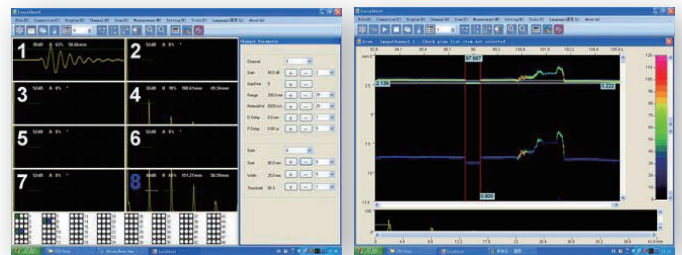


CTS-5XX1 series

Multi-Channel Ultrasonic Flow Detector series are based on PC platform. By working with probe detection and mechanical devices, this new series can achieve automatic ultrasound testing with high accuracy, reliability and high efficiency.

Superior Features

- It can support from 32 to 128 channels (four types of housing for 32/64/96/128 channels).
- Each PCB has 8 independent T/R channels.
- For the same PCB, any transmission channel can combine with any receiver channel. Each PCB can have combination up to 8 groups.
- For the same PCB, the channels work in turn. Different PCBs can work at the same time or work in turn.



A Scan

B Scan

CTS-8XX series

4/6/8/16/32-channels flow detectors are available for selection.

- High Performance
- Anti-Interference
- Real-time Auto Alarm
- Ethernet Communication
- Remote Control
- Flaw Detection Data Management



Application

It can achieve automatic ultrasound testing on section steel, such as steel tube, steel rod, steel billet and steel plate, by working with probe detection and mechanical drive devices.



NDT Solutions

PAUT Solution for Long-distance Pipeline

For one/dual-side inspection on long-distance pipeline in petrochemical industry.
Dual-side phased array inspection and PAUT+TOFD inspection for selection.



PAUT Solution for Small Pipe Weld

For girth weld inspection on pipe with OD ranging 20.32-114.3mm and wall thickness ranging 4-20mm.



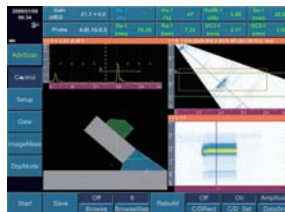
PAUT Solution for Medium Pipe Weld

For girth weld inspection on pipe with OD ranging 100-300mm.



PAUT/TOFD Solution for Flat Weld

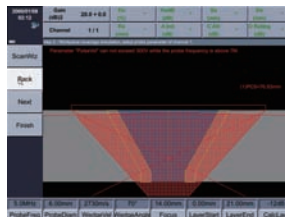
Compatible with different crawlers for various flat weld inspection.



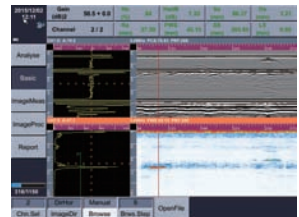
RayTracing (A+B+R scan)



Various Weld Types



Beam Coverage Simulation



TOFD+Conventional UT to inspect blind zone area



NDT Solutions

PAUT Solution for Corrosion

With Dual Linear Array Probe and different corrosion mapping scanner, SIUI's PA ultrasonic flaw detector can be used for phased array testing on small&medium areas, immersion pipeline and even for scanning in any direction in two-dimensional space.



Corrosion C scan

Ultrasonic Crawlers

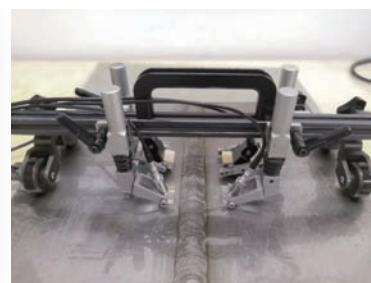
PA & TOFD Crawlers



UHTS-X02(six combinations)



PTS-P05 (three combinations)



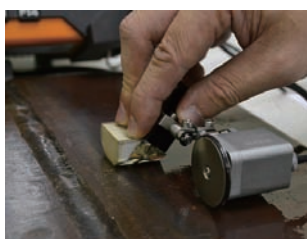
TES Series

*Both UHTS-X02 and PTS-P05 supports irrigation wedges and non-irrigation wedges.

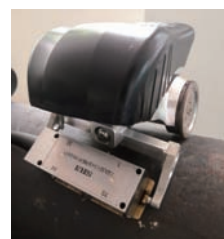


LPS Series

PA Crawlers



PES Series



Corrosion mapping crawler

Probes and Accessories

The line of ultrasound probe includes normal, angle, variable-angle, dual, immersion, focusing angle-beam, broadband normal probes, composite probes, TOFD probes and phased-array probes, which can meet different application requirements of customers. In addition, OEM orders can be accepted subject to specifications and purchase quantity.

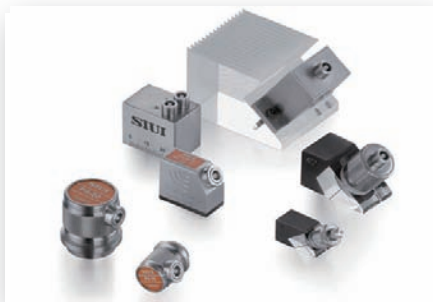
Phased Array and TOFD Probes



SIUI can provide:

- A series of PA and TOFD probes for different kinds of inspections
- Customization of PA and TOFD probes with different specifications
- PA and TOFD probes with different connectors compatible with equipments from other manufacturers.

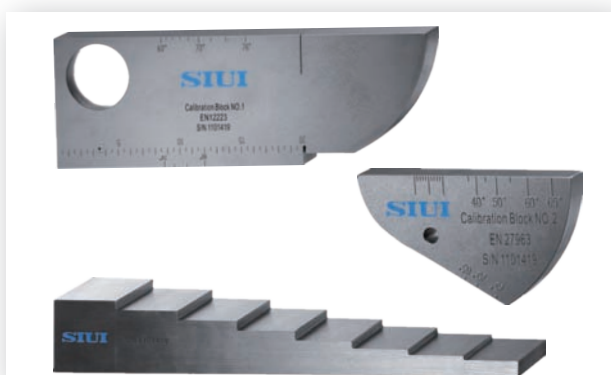
UT Probes



Wedges



Calibration Blocks



Probe Cables





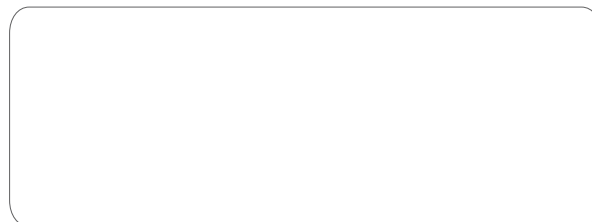
SIUI

Shantou Institute of Ultrasonic Instruments Co., Ltd.

Add: #77, Jinsha Road, Shantou 515041, Guangdong, China

Tel: +86-754-88250150 Fax: +86-754-88251499

E-mail: siui@siui.com Website: <http://www.siui.com>



Specifications and appearance are subject to change without prior notice.
DCY2.791.EN.Catalog.CY/6C06